

Diasa





Lázaro Cárdenas No 1994 - 5 teléfono.

(33) 3810 6260 ext. 119

Cel: 3311204134

Email: gerencia@diasamex.com.mx





Experience that matters.

We are a 100% Mexican company based in Guadalajara, Jalisco with over 20 years of experience as a leading of process materials, production supplies, maintenance, ESD control, industrial safety and quality for the Electronic Manufacturing Industry, Automotive, Aerospace, Medical, Pharmaceutical, Chemistry, Petrochemistry, among others.

As a company, our goals are the customer satisfaction with a unique combination of customer service and a professional salesforce, plus the on-site technical support provided by factory representatives, offering quality products and market competitive prices thus achieving long-term relationships with our customers and suppliers.

Besides distribution, our business activities include:

- ESD Counseling.
- ESD Training and Audits under the current ANSI 2020 standards.
- On-site product demo, witch allow users to perform any relevant evaluations on the product before purchasing the required solution in order to satisfy the needs for theirworking areas.

At DIASA, we have inventory available in our warehouses located in Guadalajara and Queretaro City, always ready to offer a quick response on the needs of our customers.

CC25 Series High Quality Fabric Wrist Straps

Features:

Specification

Wrist Band:

- Length 220mm
- Inner Surface Elastic Nylon with silver plated threads
- Outer Surface Elastic Nylon, insulative
- Color Light Blue
- Resistance 150-200 Ohm/inch
- plastic Parts ABS/PC
- Back Plate 304 Stainless Steel, Non-allergenic

Coil Cord:

- Conductor 7-Strand Twin tinsel wire
- Jacket insulation 90 Shores A Polyurethane
- Wire Diameter 0.10"
- Coil Diameter 0.04' - 0.02'
- Molding Material Polyurethane
- Color Black



HV-15-3 HEEL GROUNDERS

Cup Style Heel Grounders are made with a symmetrical design that can be reversed when worn to reduce wear and tear. They feature a dual layer rubber with a non-marking inside and a conductive black outside. A 1meg resistor and a 18" conductive ribbon are standard.

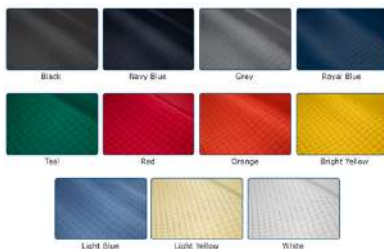
Specifications:

- Resistor: 1 Meg
- Strap: Stretch Velcro
- Rubber Exterior: 10^{5}ohms
- Size: 1.25" Wide
- Ribbon: 18" Conductive Yarn
- Closure: Velcro



ESD Cleanroom Garment Clothes

materil: Polyester fiber and conductive fiber
 Conductive Fiber Interval: 5mm grid
 Style: With bag and button
 Color: White
 Logo: embroidery
 Electronics, semi-conductor, LCD, pharmaceutical, biotech, constructions, optoelectronic, aerospace, etc.



- Neck Type
- MAO
- Sport
- In front
- Brooches
- Closure
- Long sleeves
- standard Fist
- spring
- Brooch
- Cardigan



MIC-250ESD

Features:

- Material: 20%nylon+80%Polyester
- Structure: Knitting
- Basic weight: 250±5 g/m2
- Edge: Laser Cutting
- Size: 22x22cm
- Packing: 100pcs/bag - 10bags/ctn
- Carton Size: 48x25x47cm
- Gross Weight: 17.7Kgs
- Net Weight: 17.2Kgs



CUB-BOC-CH

Features:

- 3 layers disposable face mask
- Material: Non-woven fabric
- Size: 17.5 x 9.5 cm
- Color: White, blue, green or customized
- Type: disposable mask
- Packing: 50pcs / bag, 40 bag / carton
- Carton size: 52x40x30 cm
- Gross weight: 7KG/ctn
- Certificate: CE, FDA
- Protection: Three layers of purifying dust, toxic gases in the air, and skin friendly filter cloth, giving you multiple protections, protects against dust, allergens and contaminants.



CLEANROOM WIP1009S PREMIER

Features:

- The wiper is made of continuous filament and conductive fibre in interlock and double-knit pattern. Cold cutting and laundered in a class 10 Laundry using DI water and packed in class 10 Cleanroom.
- Fiber: 100% polyester
- Lightweight with a textured surface for effective cleaning(100±5g/m2)
- Cold cutting, good sorbency with solvents
- Laundered by DI water & packed in class 10 Cleanroom
- Low particles and fibres generation.
- Low metallic ion content
- Chemical resistant
- Ideal for semiconductor, TFT-LCD, PCB manufacturing processes for class1000 environments.



WIP-9X9-SPECIAL

Features:

- Material: 100% Polyester (Same as samples we send)
- Cutting Way: Cold Cutting
- Weight: Double Knitting (120g/m2)
- Size: 9"*9" (21.5cm*21.5cm)
- Packing way: Double packaging
- Superb absorbency & cleaning performance
- Abrasion and Chemical Resistance
- Soft texture, cleaning surfaces without any damage
- Low particles and fibers generation.

Application:

- Ideal for semiconductor, TFT-LCD, PCB manufacturing processes for class1000 environments., work surfaces, floors walls cleaning, precision product surface cleaning, Laboratory, Factory, electronics, semiconductor, Hard disk drive, SMT, PCB and so on.

WIP - PINK Static Safe Wiper

Features:

The WIP PINK static dissipative polyester wiper controls static charges when cleaning surfaces. A perfect wiping choice for optics, LCD screens and other materials at risk from scratching. Contains no carbon filament which can abrade surfaces. Will not tribo-charge over 100 volts.

- Static dissipative ESD wipes for all electronic manufacturing and optical cleaning applications
- Complies with ANSI/ESD S20.20 (per ANSI/ESD S11.11 & ANSI/ESD DS11.12)
- 100% knitted polyester
- No carbon or metal fibers
- Less than 100 volts tribo-charge
- Good solvent resistance, lint free





COTTON SEABS

Description:
We offer high-quality swabs and applicators to meet a wide variety of cleaning and maintenance needs. We use specialized materials to ensure our cotton and foam swabs are durable and generate minimal particulate matter during use.

The most common solvent for all types of cleaning is isopropyl alcohol (IPA), which is generally compatible with all types of swab materials. Sometimes a more aggressive solvent such as acetone or toluene is needed to remove tough contaminants such as excess adhesive, stains, coatings, cooked fluxes, and some biological materials. Solvent compatibility can be an important factor in selecting the best swab for your application.

The line of swabs we offer are suede, cotton and urethane material. Whether you need a round, tapered or rectangular tip shape, you will find the right configuration for your general and precision cleaning applications.

FEATURES AND BENEFITS: Crosslinked polyurethane foam
Thermally bonded head Great absorption, Low particle count
Flexible tip for a softer touch.

Cotton Swabs - Cotton swabs are the most economical option for high volume use. Cotton swabs are highly compatible with even the most aggressive cleaning solvents, from mild IPA to aggressive acetone. Cotton can tend to snag on contacts (i.e. pass-through wires) and leave particles behind.

Foam swabs - Foam swabs are ideal for more precise cleaning in cases where it is necessary to avoid lint formation. The closed cell structure of polyurethane foam has less tendency to snag compared to cotton, and it is still highly absorbent.

CLEANROOM AND CUSTOM ESD BRUSHES

The ESD brush has been developed over time to meet the specific needs of the electronics industry, as well as industries where the build-up of static electricity or charges is detrimental to the manufacturing process. The ESD brush line has been expanded to formally include clean room applications. Each brush category is designed based on the items you are working with and the corresponding brush characteristics required to accomplish the task at hand. Anti-static brushes are made of low-load materials. Cleanroom brushes are heat tolerant and therefore can be autoclaved. See the following pages beginning with About ESD Brushes for detailed information on static electricity, its effects, and how brushes can solve static buildup problems. ESD (electrostatic discharge) brushes provide manufacturers of electronic products and static-sensitive products with tools for cleaning and manufacturing that do not generate static charges. Over the years, a variety of brushes have been assembled to meet the variety of needs associated with low load (antistatic) brushes. Gordon Brush offers conductive, static dissipative or insulating brushes to suit your unique needs.

Anti-static brushes and static electricity

Static charge (electricity) is a fairly simple event, but often misunderstood. Simply put, a static charge is generated between materials through friction, pressure, or the separation of two materials. This process is called the Triboelectric Effect [tribo means rubbing]. A material that inhibits the generation of static charges is classified as low charge (antistatic). Low load (antistatic) materials used to make these natural bristle brushes include wood, hog bristle, horse hair, and goat hair. These materials can be used in ESD sensitive areas as long as the brush remains in a liquid environment. In a dry environment, only conductive or dissipative materials should be used in ESD safe areas.

Anti-static and ESD brush applications

The general applications of any brush are: apply, push, remove, clean, spread or act as a barrier. Specific uses for antistatic and ESD brushes include:

- Solder removal
- Dust / dirt removal
- Rework of the panel preparation board
- Lead trim rework
- Cleaning the edge connector
- Static dissipation and sweep
- General cleaning





DUST-FREE NITRILE GLOVES

Description:

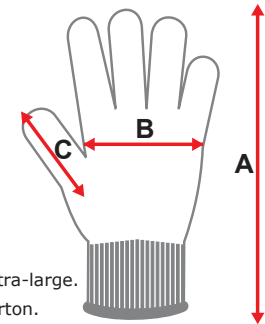
- Nitrile single-use gloves.
- Ambidextrous gloves.
- Stretching gloves.
- Non-sterilized.
- Rolled fist.
- Protects user's hands from contaminant substances.
- Alternate option for latex allergy.
- Protects processes from potential contamination.
- Meets FDA requirements.
- 100% free of silicone.

Features:

- Material: 100% nitrile.
- Colors: Blue and white.
- * Available sizes: Extra small, small, medium, large, extra-large.
- Packaging: 100 pieces per satchel, 10 satchels per carton.
- Total: 1000 pieces per carton.

Item

- Extra small: TAC-NT-PF-XS / TAC-NT-PF-XS-WH
- Small: TAC-NT-PF-XS-WH / TAC-NT-PF-SM-WH
- Medium: TAC-NT-PF-MD / TAC-NT-PF-MD-WH
- Large: TAC-NT-PF-LG / TAC-NT-PF-LG-WH
- Extra Large: TAC-NT-PF-XL / TAC-NT-PF-XL-WH
- Thickness: 5 mm (+/- 1 mm)



	XS	S	M	L	XL
	9.5"	9.5"	9.5"	9.5"	9.5"
	(+/- .2")	(+/- .2")	(+/- .2")	(+/- .2")	(+/- .2")
Palm width B	3"	3.5"	4"	4.5"	5"
	(+/- .2")	(+/- .2")	(+/- .2")	(+/- .2")	(+/- .2")
Thumb length C	2.5"	2.5"	2.5"	2.5"	2.5"
	(+/- .2")	(+/- .2")	(+/- .2")	(+/- .2")	(+/- .2")

PALM P/U COATED GLOVE BGZM03

Description:

Seamless Knitted Antistatic Nylon Gloves with Polyurethane Breathable Wet Coating on palm
 Origin Made in Korea
 Materials 300 Denier (Carbon 60D, 6F / Nylon 240D, 96F) Size S,M,L



NON COATED GLOVE BGZM08

Description:

Seamless Knitted Antistatic Nylon Gloves
 Origin : Made in Korea
 Materials : 300 Denier (Carbon 60D, 6F / Nylon 240D, 96F) 13 gauge size S,M,L



TOP P/U COATED GLOVE BGZM04

Description:

Seamless Knitted Antistatic Nylon and carbón fibre ESD Gloves with breathable polyurethane coate don fingertips

Origin Made in Korea
 Materials 280 Denier (Carbon 40D / Nylon 240D, 13 gauge)
 Size S,M,L



Nylon Palm Fit Gloves BBG-BLACKCB

Description:

Seamless knitted nylon gloves with breathable polyurethane coated on palm
 Origin : Made in China
 Materials: 280 denier 13 gauge
 Size : S M L XL 2XL
 Properties : Manufactured with stretchable nylon PU coated on the palm.
 Applications : Automotive manufacturing, Electronic, Garden light work



Three Layer ESD Vinyl Table Mat

Protect your sensitive items as well as your work surface with shock absorbing ESD matting

FEATURES

Three Layer Vinyl: 10⁷–9 x 10⁸ Rtt
Absorbs and reduces high impacts risk of electrical shock Available in 60ft rolls or an Assortment of cut to order table mats Available in light blue color.

Specifications:

Thickness 0.375"

Color Blue

Emboss Pattern Matte finish (non-embossed)

Gauge 0.375" +/- .040"

Density 25 lb/ft³ nominal wear layer

18 lb/ft³ nominal bottom layer

Tensile 100 lb/in² minimum Elongation 100%

minimum Tear 20 lb/in minimum Durometer 70 +/-

5, Shore OO Worksurface 1.0 x 10⁷–9.0 x 10⁸ Ω ESD S4.1-1997

The ESD matting is rated to 200F (93C). The mats are heat resistant, not heat proof. They will withstand exposure to high temperatures, but it is dependant on exposure time



ESD Rubber Table Mat

ESD Rubber Mat has a static dissipative top rubber layer laminated to a conductive rubber bottom layer. Surface resistivity of the top layer is 10⁷ - 10⁹ and bottom layer is 10³ - 10⁵

The ESD Two Layer Mat material offers excellent resistance to oil, grease and most common solvent and which are ideal for work stations. Color : Green/Black , Grey / Black, Blue/Black

Surface Status : Shining / Non Shining

Size : 1M (W) x 10M (L) x 2mm (T)

0.6M (W) x 10M (L) x 2mm (T)

0.8M (W) x 10M (L) x 2mm (T)

1.2M (W) x 10M (L) x 2mm (T)

Applications: Computer Operators, Electronic assembly and manufacturing, Pharmaceutical Plants, Cleanroom operation, Fiber Optics, Aerospace and Hospitals. To be used in work surface applications.



• Surface Resistivity Top Layer ASTM D257 ohm/sq 10 e 7-9

ESD Antifatigue Mat (Interlocking Design)

General Descriptions

•ESD Antifatigue Mats are suitable for assembly lines and other workplaces, where the long-standing jobs are frequently required, to reduce individual workers' fatigue from their jobs.

•Round shape rugged surface provides a finger-pressure

therapy effect on feet. They not only have a good function to relieve the stress of the legs, but also give a quick pathway for the static electricity, charged in human body, to ground. It is heat,abrasion and chemical resistant.

•Material: 100% Conductive NBR (Nitrile-Butadiene Rubber)

•Surface Resistivity : 10e5 - 10e6 Color : Black Size : 600mm x

900mm x 16mm (Thickness) Weight/mat :

2.7kg Packing: 7mats /carton

CN-ANF2436-BLACK



Our ESD Anti-fatigue mats are scientifically and ergonomically designed to reduce fatigue caused by standing for long periods on a hard surface.

The elastic texture and round shape rugged surface of the ESD anti fatigue mats reduce the load on bones, joints and musculature.

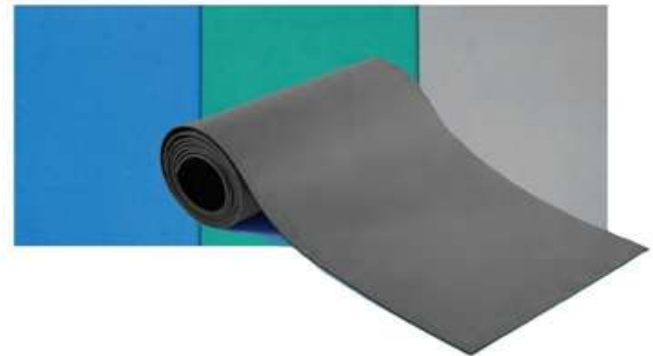
Pressure on the sensitive toe and ankle area is

considerably reduced since the anti fatigue ergonomic mat cushions the weight. Imperceptibly, the feet are always in motion which in turn stimulates blood circulation. The anti fatigue ergonomic mat stimulates the blood circulation in the legs, you stand permanently comfortable and relaxed

Shelf Life: To obtain best performance, use this product within 12 months from date of manufacture

RoHS Compliance Statement None of the following

materials are intentionally added in manufacturing this product: lead, mercury, cadmium, hexavalent chromium, polybrominated biphenyls (PBB) or polybrominated diphenyl ethers (PBDE) as outlined in the Directive 2002/95/EC Article 4.1.



•Blue / Green / Grey
Technical Specification

•Physical Property Test Method Unit Typical Value

•Thickness ASTM D2103 mm 2 Tensile Strength Top Layer

ASTM D412 Kg/sq.cm >120 Bottom layer ASTM D412

Kg/sq.cm >160 Tear • Strength Top Layer ASTM D412 Kg/cm >90

• Bottom Layer ASTM D412 Kg/cm >100 Elongation Top

Layer ASTM D412 % 350 Bottom Layer ASTM D412 % 250 Hardness

(Shore A) Top Layer ASTM D2240 65 Bottom Layer (+/- 5) ASTM D2240

75 Gravity Top Layer ASTM D792 1.3 Bottom Layer ASTM D792 1.4

• Electrical Properties Test Method Unit Typical Values

•Bottom Layer ASTM D257 ohm/sq 10 e 3-5

•Static Decay EIA- 541 sec < 0.01

• Shelf Life: To obtain best performance, use this product

within 12 months from date of manufacture

• Grounding: This material must be properly grounded for

optimum electrical performance.

• Cleaning: For optimum electrical performance, Surface

must be cleaned regularly using an ESD safe mat cleaner designed for

static mat. Do not use commercial cleaners on mats. The cleaners may

leave a residue that prevents the mat from draining away charge.

Color: Grey,Blue,Green, others on request (minimal

variation between batches).

Mat Rolls need to be unrolled before being cut. When rolled some

shrinkage may occur. Please allow time for mat to relax at room

temperature 24-48 hours prior to cutting.

Warranty; Limited Remedy; Limited Liability. This warranty does not cover dissatisfaction, problems or damage due to installation or maintenance or misuse of any kind, including using inappropriate cleaners other than as recommended by Manufacturer as generally accepted.

RoHS Compliance Statement None of the following

materials are intentionally added in manufacturing this product: lead, mercury, cadmium, hexavalent chromium, polybrominated biphenyls (PBB) or polybrominated diphenyl ethers (PBDE) as outlined in the Directive 2002/95/EC Article 4.1.



2A-SA-SE-PAK

Features:

- Product Type: Tapered Tip Tweezer
- Material: Stainless Steel
- Material Category: Metal
- Overall Length: 4-3/4in
- Point Type: General Precision
- Anti-Magnetic (Yes/No): Yes
- Anti-Acid (Yes/No): Yes

Technical information:

- Country of Origin: Pakistan
- Tariff Code: 8203.20.99
- Carton Quantity: 1
- Product Type: Tapered Tip Tweezer
- Material: Stainless Steel, Stainless Steel

Anti-Magnetic

- Material Category: Metal
- Overall Length: 4-3/4in
- Point Type: General Precision



LX54-3-PAK

Features:

- Forged steel for strength, durability, and long life
- Machined with precision for tight tolerances
- Hardened electronically, tempered for toughness
- Honed to precise cut requirements
- Stainless steel leaf springs welded in place
- Cushioned grips for operator comfort
- ESD safe for component protection
- Each jaws has fine parallel serrations and beveled edges

Specifications:

- ESD - Safe: Yes
- Product type: Long Nose Plier
- Jaw Type: Serrated
- Jaw Length: 1.02in
- Material: Forged Steel
- Overall Length: 5.25in
- Handle Type: Cushion Grip
- Handle Material: Cushion Grip
- Material Category: Metal
- Color: Blue
- Primary Color: Blue
- Finish: Ergo Black
- Standards Met: ISO 14000 Compliance

AA-SA-SE-PAK

Features:

- Product Type: Straight Tip Tweezer
- Material: Stainless Steel
- Material Category: Metal
- Overall Length: 4-7/8in
- Point Type: General Precision
- Anti-Magnetic (Yes/No): Yes
- Anti-Acid (Yes/No): Yes

Technical information:

- Country of Origin: Pakistan
- Tariff Code: 8203.20.99
- Carton Quantity: 1
- Product Type: Straight Tip Tweezer
- Material :Stainless Steel, Stainless Steel
- Anti- Magnetic
- Material Category: Metal
- Overall Length: 4-7/8in
- Point Type: General Precision



CHP-170-PAK

Specifications:

- Brand: CHP Tools®
- Product Type: Medium Cutter
- Jaw Lwngh: 8mm
- Head Width: 13.5mm
- Head Thikcnss: 2.5mm
- Material: Carbon Steel
- Overall Length: 4.75in
- Handle Type: Dolphin Style Grip
- Material Category: Metal
- Cutting Capacity: 16AWG
- Cut Type: Flush
- Color: Red/Black
- Primary Color: Red/Black

Technical information:

- Country of Origin: Italy
- Carton Quantity: 50
- Product Type: Medium Cutter
- Jaw Length: 8mm
- Material :Carbon Steel
- Overall Length: 4.75in
- Material Category: Metal

MX54-3-PAK

Features:

- For intricate and repetitive work between and under closely spaced components
- Induction hardened edges optimize cutting ease and life
- Flush Cut for a sharper edge requiring less squeeze and reduces sprike OAL 4.25in, Jaw 0.60in

Specifications:

- Product type: Diagonal Cutter
- Jaw Style: Oval Relieved
- Jaw Length: 0.6in
- Material: Forged Steel
- Overall Length: 4.25in
- Head Width: 13/32in
- Head Thickness: 15/64in
- Handle Type: Cushion Grip
- Handle Material: Cushion Grip
- Material Category: Metal
- Cut Type: Flush
- Color: Green
- Primary Color: Green



60505 High Output Benchtop Ionizer Installation, Operation and Maintenance

DESCRIPTION:

The Desco High Output Benchtop Ionizer is a compact and lightweight steady state DC auto-balancing benchtop worksurface ionizer with integrated closed-loop feedback. The unit is normally placed at one end of the workbench or area to be neutralized. It may also be mounted to a wall or shelf. The Ionizer's neutralization discharge time will be best approximately 12" to 48" directly in front of the unit and will increase as the distance from the unit increases.

- Bench Top Steady State DC Ionizer Specially designed fan modules create better coverage (16" x 24") consistent offset voltage (balance) ± 3 volts, and superior discharge times (<1 second at 12") tested per ANSI/ESD STM 3.1
- Sealed Plenum Air Flow Prevents contamination from being introduced to workstation.



19322 - Continuous Full Time Monitor

FEATURES

Single Workstation Continuous Monitor

Continuously monitors the path-to-ground integrity of one operator, one ESD worksurface, and the electrical ground used to by the monitor.

IMPROVED Operator Alarm

Alarms when the operator unintentionally disconnects from the monitor or the connection between the banana plug and monitor's jack is intermittent

NEW AC Outlet Monitor Circuit

Verifies the wiring of an AC outlet and continuously monitors its path-to-ground integrity; fulfills the ANSI/ESD S6.1 section 6.3.1 requirement

NEW Park Delay Timer

Indicates the 8 second delay to disconnect and park the operator wrist cord

NEW Embedded Relay Terminal

Activates when a pass condition is displayed the monitor. Connect to machines for access control or other devices.

NEW Mat Monitor Switch

Disables the worksurface monitor circuit when used in areas where there is no ESD worksurface

NEW Audible Alarm Adjustment

Sets the audible alarm volume from loud to louder

NEW Enclosure with Mounting Tabs

Installs in workbench and equipment environments



19239 - Continuous Mini Monitor, North American Plug

DESCRIPTION:

The Desco Mini Monitor is a single workstation continuous monitor. It continuously monitors the path-to-ground integrity of one operator and one ESD worksurface. The Mini Monitor eliminates the need for periodic testing and record keeping of wrist straps. The Mini Monitor is designed with Wave Distortion Technology which provides stable continuous monitoring of the path-to-ground and presence of 1 megohm resistance of an operator's wrist strap. Audio and visual alarms activate (in less than 50 milliseconds) when the operator unintentionally disconnects from the monitor or the wrist strap connection points are intermittent. The Mini Monitor also serves as a ground point for an ESD worksurface and monitors for a path-to-ground of less than 500 megohms. All Mini Monitors are calibrated to NIST standards and include a certificate.

FEATURES

- Single Workstation Continuous Monitor

Continuously monitors the path-to-ground integrity of one operator and one ESD worksurface

- IMPROVED Operator Alarm Alarms when the operator unintentionally disconnects from the monitor or the connection between the banana plug and monitor's jack is Intermittent

Desco Wave Distortion Technology

Provides stable continuous monitoring (versus pulsed or intermittent) of the wrist strap's path-to-ground* and the presence of its 1 megohm safety resistor

- Park Snap Allows the operator to disconnect (and park) a wrist strap when leaving the workstation without creating a false alarm
- Single-Wire Impedance Design Meets ANSI/ESD S20.20 in accordance with ESD TR1.0-01-0
- 1.2 Volt Operator Test Voltage

Reduces the risk of electrical overstress (EOS) for the handling of sensitive components • <50 Millisecond Alarm Response Time Identifies failures and intermittencies that inferior technologies miss



19590 - CHARGEbuster ION GUN, NORTH AMERICA

DESCRIPTION:

The Desco Chargebuster Ion Gun is a point-of-use ionizer used for neutralizing electrostatic charges to eliminate attraction, visual imperfections and contamination issues by dislodging charged dust and debris. It uses compressed clean dry air (CDA) or a compressed gas supply. Less than 1 second discharge times with ± 30 volt offset voltage balance meet the required limits of ANSI/ESD S20.20 and ESD TR53. A 7-foot ESD hose with trigger switch allows operators freedom of motion and minimizes awkward or unsupported positions. The quick change filter in the console collects small residual particles. "There is sometimes a need to provide static control in a small defined area or location. This may be done to provide static control within production equipment, in mini-environments, or to facilitate particle removal from part of a product. Ionizers used for this purpose may be blow-off guns or nozzles that work with a supply of compressed air or nitrogen. They may use either nuclear, soft x-ray or any of the previously described types of corona ionization technology. It will be important to choose a method of ionization and cleanliness of the gas supply that is appropriate to the work area." (ESD handbook ESD TR20.20 section 5.3.6.5.2.4 Point-Of-Use Ionization) Point-Of-Use Compressed Air Ionizer Neutralize electrostatic charges to eliminate ElectroStatic Attraction (ESA), visual imperfections, and contamination by dislodging charged dust and debris.

FEATURES

- Fast < 1 Second Discharge Times with ± 30 Volt Offset Voltage Balance Tested Per ANSI/ESD STM 3.1 and ESD TR53
 - Meets ANSI/ESD S20.20 ionizer required limits
 - Modular Design with 7 Foot ESD Protective Hose with Trigger Switch
 - Allows operators freedom of motion and minimizes awkward or unsupported positions
 - Use Filtered Air or Nitrogen – No Adjustment Required
 - Allows for quick change between compressed gas supply
 - Console Mounting Hardware Included
 - Mount the Ionized Air Gun in the most convenient and productive locations
 - Quick Filter Replacement Feature
 - Minimizes down time
 - 120VAC Power Adapter with North American Plug
 - Works with standard electrical systems in North America
 - NIST Calibrated with Certificate Included
- Calibrated with accepted procedures and standards traceable to the National Institute of Standards and Technology. For more information on calibration of Desco products, see the Calibration web page.



PTECTM Ionizers IN3425 Ionizing Gun



Transforming Technologies' IN3425 air ionizing nozzle is a highly efficient static eliminator that is perfect for compact or hard-to-reach areas. A small, self contained device, the IN3425 produces a powerful stream of ionized air to neutralize charges while cleaning particulate from surfaces. The unique size and shape allow the ionizer mounted in hard to reach areas and integrated into machines.

Features

- Pin-Point Precision Ionization
- Optional Nozzle Tips to Customize the Spread of Ionized Air.
- Small Footprint with Mountable Base
- Inherently Stable Ptec™ Technology
- Dense Output of High Frequency AC (68KHz) Ion Emission

Ptec IN4000 Airflex Flexible Neck Ionizing Nozzle



The IN4000 flexible nozzle neck frees the operator's hands during assembly and manufacturing processes. A foot pedal controls both ionization and airflow, which reduces compressed air costs and extends the life of the ionizer. The model IN4000 ionizing air nozzle produces a 68KHz AC output of approximately 2200V and a continuous stream of balanced air ions.

Maintenance Savings

Ptec™ ionizers save time and money because they require no calibration. Emitter life is increased and maintenance frequency is reduced, due to 68KHz AC ion emission.

Features

The IN4000 features the inherently stable output of all Ptec™ Ionizers and high-frequency AC (68KHz) ion emission. The flexible metal neck, with multiple nozzle options allows for easy operation and service of emitters. A foot switch and .01 micron filter combine to deliver clean air at the correct pressure when needed.

4006992- TOP GUN WITH OPTIONAL SIDEKICK

DESCRIPTION:

The Top Gun with Sidekick offers hands-free operation and flexible positioning during assembly and manufacturing processes. A foot pedal controls both ionization and airflow, which reduces compressed air costs and extends the life of the ionizer. The flexible gun mount allows the operator to focus the ionized airflow where it is needed. The stand includes a steel bracket for easy bench-top mounting.

Fully adjustable 18 inch neck focuses the ionized airflow
Tabletop bracket provides easy mounting
Foot pedal permits hands-free operation

FEATURES:

Input Voltage 120 VAC, 60 Hz, 0.2A; 230 VAC, 50 Hz, 0.1A
Discharge 1.3 sec @ 6" (15.2 cm), 30 psi ($\pm 1000-100V$); 0.5 sec @ 2" (5 cm), 60 psi ($\pm 1000-100V$)
Balance $\pm 15V$
Flow 2.4 scfm @ 30 psi (68/min, 2 bar); 4.6 scfm @ 60 psi (130/min, 4 bar); 7.4 scfm @ 100 psi (210/min, 7 bar)
Blow-off Force 180g @ 100 psi, 2" diameter target 3" from the gun
Air Pressure Pressure relief in nozzle complies with OSHA requirements
Audible Noise 76 dbA @ 30 psi input (2 bar); 89 dbA @ 60 psi input (4 bar); 97 dbA @ 100 psi input (7 bar); measured 24" (600 mm) from nozzle
Operating Env. Temperature: 32-104°F (0-40°C); humidity: 30-60% RH (non-condensing)
Ozone 0.001 ppm measured 18" (450 mm) from gun, operation @ 15 psi (1 bar)
Filter 0.01 micron rating; replacement filters available
Gas Input 100 psi max; Clean Dry Air (CDA) or Nitrogen
Gas Connection 1/4" NPT (female)
Air Hose Static dissipative polyurethane, 7' or 14' standard, 5' or 14' with optical sensor (integral to gun and control module)
Enclosure Gun: Static dissipative polycarbonate/ABS blend; cable: static dissipative polyurethane
Dimensions Gun: 6.5 oz (185g); air hose: 1.25 ounces/ft (115g/m)
Warranty 2 year limited warranty



4005105 - TOP GUN™ IONIZING AIR GUN

DESCRIPTION:

- Maximum user comfort prevents operator fatigue and increases productivity
- Airflow use that meets the specific application requirements
- Protects ESD sensitive components and assemblies
- Insures air contacting the target area is clean
- Eliminates the guesswork of ionization at target area

FEATURES:

- Lightweight, Ergonomic Design
- Flow Control Valve for Adjustable Airflow
- Electrically balanced ion output
- Integrated, Replaceable Filter-Nozzle

Top Gun with Optical Sensor

For automated assembly, all versions of the Top Gun are available with an optional Optical Sensor, which automatically activates the gun when an object is in range. The Optical Sensor has an "adjustable range" from 1-30 inches.



50664 - 2-Fan Zero Volt Overhead Ionizer, 120VAC 50665 - 3-Fan

Description:

The patented* EMIT Overhead Zero Volt Ionizer (ZVI) is a steady-state DC auto-balancing ionizer with integrated closed-loop feedback. It combines the effectiveness of steady-state DC ionization with ease of adjustability, communication capability and the flexibility of a microcontroller-based design to produce a versatile and stable ionization system. Its fans produce extended ionization coverage and are ideal for areas where bench space is limited

Features and Components

- A. Mounting Bracket: Attach the included hanging kit to these brackets to install the ionizer.
- B. Power Cord Inlet: Connect the power cord here to provide power to the ionizer.
- C. Key Switch: Use the included keys to turn the ionizer ON or OFF.
- D. RS-485 OUT: Software communication output. To be used with EMIT SIM Software for real time data acquisition.
- E. RS-485 IN: Software communication input. To be used with EMIT SIM Software for real time data acquisition.
- F. LED Display: Displays the ionizer address, balance, fan speed and maintenance codes.
- G. Control Buttons: Use the buttons to modify the ionizer's settings.



Chargebuster® Overhead Ionizer Installation, Operation and Maintenance

Desco Chargebuster® Overhead Ionizers are steady-state DC ionizers designed for use in ESD protected areas. The 2-fan ionizers (60640, 60467) have a 2' x 4' coverage area, and the 3-fan ionizers (60473, 60468) have a 2' x 5' coverage area. The Chargebuster® Overhead Ionizers' discharge times (< 3 seconds at 18") and low offset voltage (± 10 volts) meet the required limits of ANSI/ESD S20.20 < ± 35 volts tested per ANSI/ESD STM3.1 and ESD TR53. Its emitters are made of pure tungsten and spaced further apart to minimize ion recombination, increase discharge efficiency and provide a broader coverage area. The fans have 3 speeds (high, medium, low) which produce consistent performance at all 3 settings. The Chargebuster® Overhead Ionizers utilize an auto-feedback system that continuously optimizes its performance and automatically alarms and shuts down should its supply voltage drop.

60640 - Chargebuster® Overhead Ionizer, 24", 2 Fans, 120 VAC, US Plug

DESCRIPTION:

Two steady state DC ionization 3-blade fans for one area of 2' x 4' coverage Specially designed fan modules create better coverage (2' x 4'), constant offset voltage (balance) ± 10 volts and superior discharge times (<3 seconds) ANSI / ESD tested STM 3.1

Automatic feedback system (audible and visual alarm via single tri-color LED) Unit will automatically shut down and alarm if AC supply voltage





CV510 - CV5210 CONNECTION VALIDATION SOLDERING SYSTEMS

Key Features:

- SmartHeat® Power on Demand Technology.
- Patented Connection Validation™.
- MC Formation Technology.
- 2.8" color touchscreen with bold graphics.
- Communications Port for process traceability data and firmware graphics.
- Integrated Net Power Meter and power graph. With optional precise tip temperature display.
- Patented Chip-in-Cartridge technology. Closed loop bi-directional communication. Stores and records cartridge attributes. Provides traceability information. Protects power supply from non-conforming cartridges. Backwards compatible with MX series power supplies.
- Password protection
- Wide variety of cartridges available
- Power supply protected by 5-year warranty, longest in the industry. View technical specifications



MX500 DUAL SWITCHABLE OUTPUT

Key Features:

- A built in Net Power Meter which will display a graphical and numerical representation of the power applied to the cartridge.
- User Programmable PowerSave Mode: the time to enter PowerSave Mode is adjustable from 10 to 120 minutes.
- Ground Fault Interrupt: AC ground monitor detects power line ground failures and immediately alerts the operator and shuts down the system.
- Universal Power Supply: automatically senses the input line voltage and adjusts accordingly, which allows for worldwide operation without adaptors or a change in performance.
- Full compatibility with existing and previous MX upgrade kits, tip-cartridges, hand-pieces and accessories.



[View technical specifications](#)



DX-250 Series Digital Dispenser/Controller

DX-250 . DX-350

Key Features:

- Universal power supply with Snap on plug for worldwide use
- 16 X 2 segments LCD
- Digital timing from 0.008-99.999 seconds
- +/- 0.001% Timing repeat tolerances
- Adjustable vacuum-driven "suck back" to control material "tailing" and waste
- Stable to conserve work space when multiple DX200/215 are used together.
- DX-200 controls all OK Internationala

Specifications:

- Cabinet Dimensions: 6"W x 6.5"L x 7.0"H 152mm x 165mm x 178mm
- Weight: 2.5 lb (1.1kg)
- Cycle Rate: 600 cycle/minute
- Timing Range: 0.008-99.999 seconds
- Timing Repeat Tolerances: +/- 0.001%
- AC Input Voltage: 100-240 V ac
- AC Input Frequency: 50-60 Hz
- Cycle Mode: Continue and Interrupt
- Meets or exceeds: CE, TUV-GS, NRTL and eK
- Warranty: 1 year

Color Coding and Gauge For TE Series and TE Bent Tips

Gauge	Colour	I.D. (inches)	I.D.(mm)
14	Olive	0.063	1.600
15	Amber	0.054	1.371
18	Green	0.033	0.838
20	Pink	0.024	0.610
21	Purple	0.020	0.508
22	Blue	0.016	0.406
23	Orange	0.013	0.330
25	Red	0.010	0.254
27	Clear	0.008	0.203
30	Lavender	0.006	0.152
32	Yellow	0.004	0.102





WX LINE

Key Features:

- Standby time
- Auto off time with motion sensor.
- Stand by temperature.
- Temperature window.
- Preset Temperature.
- Temperature C° / F°
- Lock function.
- Offset.
- Factory setting.
- Motion sensor in iron.
- Micro tool support.
- Intelligent tools.
- Intelligent power management.
- Firmware updated.
- USB functionality.
- Output for Zero Smog / Heating Plate / Robot.
- Fume Extraction Units (Zero Smog 4V, 6V, WX hub)
- PC connectivity via RS232 & Software.
- Performance Mode.
- Language Setting.
- LCD Background Brightness.
- 12 Connectable Tools.
- Traceability ready.

[View technical specifications](#)

WT LINE

Key Features:

- Standby time
- Auto off time with keystroke.
- Stand by temperature.
- Temperature window.
- Preset Temperature.
- Temperature C° / F°
- Lock function.
- Offset.
- Factory setting.
- Motion sensor in iron (WPT90 only).
- Micro tool support (WT2M only).
- High power tool support (WT1H & WT2M only)
- Firmware updated (Weller Service Centers only).
- Output for Zero Smog / Heating Plate / Robot (WHP80).
- Fume Extraction Units (Zero Smog TL, WX hub)
- LCD Background Brightness.
- 15 Connectable Tools.

[View technical specifications](#)



WE LINE

Key Features:

- Standby time
- Temperature C° / F°
- Lock function.
- Offset.
- Factory setting.
- Fume Extraction Units (Zero Smog EL, not connectable)
- 15 Connectable Tools.

[View technical specifications](#)



WXR3 SOLDERING STATION

Key Features:

- All-in-one-Station
- Benchtop controller capability e.g. Zero Smog Systems
- Automatic tool recognition and power management.
- Compatible with all WX tools.
- Storage medium in hand piece.
- Blue LED backlighting.
- Multilingual menu navigation.

[View technical specifications](#)





WR2 REWORK STATION

Key Features:

- Digital Self-Contained Multi-Channel Rework Station - 120 V / 400 W
- 3 Independent tool channels with automatic tool recognition.
- Application flexibility with up to 19 tool options.
- Self contained vacuum and air.
- PC connectivity and data logging software included
- Not compatible with WRK kit or WVP vacuum pencil

[View technical specifications](#)

SOLDERING BATHS WS80, WSB150, WSXB200

Key Features:

- Accessory for WT series soldering stations and WR series rework stations
- For tin coating and preparation of small electronics components and leads
- Also used to clean excess solder from small component leads
- Precision temperature control / 150° F - 850° F / 50o C - 450o C
- Heated surface - 80 W: Soldering bath
 - Ø 0.8" x 0.98" D / Ø 20.3 mm x *24.9 mm D
- Compatible with lead free solders
- ESD safe

[View technical specifications](#)



PREHEATING PLATES WHP80, WXHP120, WHP200, WHP1000, WHP3000

Preheating plates are used to preheat circuit boards under repair to reduce the possibility of thermal damage and to reduce the heat requirement of the soldering tool for speeding up the repair process.

Key Features (WHP3000):

- 120 V - 200 to 600 Watt Digital Preheating Plate.
- For rework of single or dual sided PC board assemblies
- Short wave IR heaters ramp up the temperature of the PC board assembly from below
- Precision temperature control / 150° F - 750° F (50° C - 400° C)
- Read and set temperatures are indicated digitally.
- RS-232 Interface for connection to Weller hot air stations WHA 3000 or WX series soldering stations mm x 60mm
- Heated surface - 600 W: Large heating plate - 4.72" x 7.28" / 120 mm x 185 mm
- Heated surface - 200 W: Small heating plate - 4.72" x 2.36" / 120

- Thermocouple (Type K) input for temperature control at the component level [View technical specifications](#)

SOLDERING TIPS AND NOZZLES

Key Features:

- Tool Protection.
- Precise control ergonomic grip.
- MILC Spec / IPC standard. t
- Low cost - in - use.
- Digital tool.
- Active tip technology.
- Patented tip and grip design.
- One intelligent WX platform.





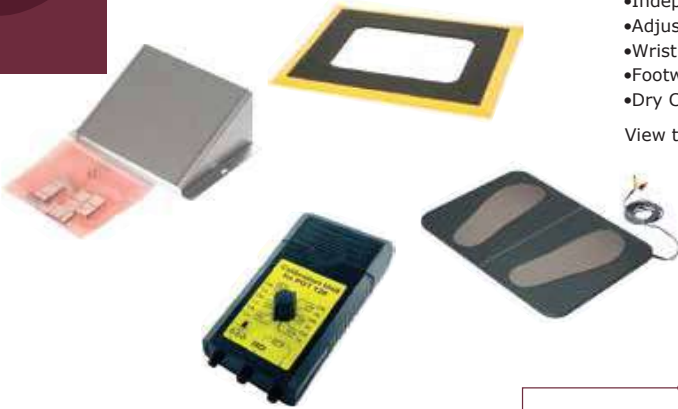
ESD TEST STATIONS PGT120

A quick and accurate wrist strap and footwear tester that indicates results with audible and visual signals. A relay with a dry contact provides the connection to a barrier system, such as a door. In combination with a barrier gate, the footwear measurement can be performed in series without pressing a button (hands-free mode).

Features:

- Independently Test Both Feet & Wrist Strap
- Adjustable Limits and Functions with DIP Switches.
- Wrist Strap Range: 1Meg~35Meg Ohm (Default).
- Footwear Range: 1Meg~100Meg Ohm (Default)
- Dry Contact Connection to Barrier System

[View technical specifications](#)



METRISO® 3000 HIGH RESISTANCE TEST KIT

The METRISO® 3000 is a digital high resistance tester capable of measuring point-to-point resistance and resistance-to-ground measurements with a large test range of 1 kOhm to 1,2 TOhm.

The meter includes an integrated data logger with a USB communication port for data transmission, temperature and relative humidity sensor, PC software for Windows, two disk probes, a hand-held probe with connecting cable, and a conductive carrying case fitted with dissipative pink foam.

Specifications:

- Test Range: 1K Ohm -10T Ohm.
- Test Voltage / Test Current: 1 mA < I < 1,3 mA.
- Operation: Rechargeable Batteries.
- Probes: Two 5lbs with Conductive Rubber One Hand-Held Probe.
- Complies with ANSI20.20.

Features:

- Measures Large Test Range.
- Measures Temperature and Humidity.
- Records Test Values & Creates Reports via USB PC Connection.
- Conductive Carrying Case.

[View technical specifications](#)



METRISO® B530 HIGH RESISTANCE TEST KIT

The METRISO® 3000 is a digital high resistance tester capable of measuring point-to-point resistance and resistance-to-ground measurements with a large test range of 1 kOhm to 1,2 TOhm.

The meter includes an integrated data logger with a USB communication port for data transmission, temperature and relative humidity sensor, PC software for Windows, two disk probes, a hand-held probe with connecting cable, and a conductive carrying case fitted with dissipative pink foam.

Specifications:

- Test Range: 1K Ohm -10T Ohm.
- Test Voltage / Test Current: 1 mA < I < 1,3 mA.
- Operation: Rechargeable Batteries.
- Probes: Two 5lbs with Conductive Rubber One Hand-Held Probe.
- Complies with ANSI20.20.

Features:

- Measures Large Test Range.
 - Measures Temperature and Humidity.
 - Records Test Values & Creates Reports via USB PC Connection.
 - Conductive Carrying Case.
- [View technical specifications](#)

ESD AUDIT KIT 7110.600.SET / 7110.B530.SET

The ESD Audit Kit includes the relevant test instruments and equipment needed to perform ESD audits according to ANSI ESD20.20 and IEC 61340-5-1 and for qualification and verification of ESD control elements. Choose between the MetrisoB530 standard resistance meter or the Metriso3000 high resistance meter.

Specifications:

- Evaluate packaging materials
- Evaluate garments
- Measure flooring, work surfaces and furniture resistance
- Measure electrostatic fields
- Measure temperature and relative humidity
- Analyze ionizers performance.

[View content specifications](#)

7110.B530.SET



7110.600.SET



SMART LOG PRO® WITH TURNSTILE

The EMIT SmartLog Pro® with Alvarado EDC Waist High Turnstile verifies the functionality of an operator's wrist strap and footwear, logs the test results, and controls access to an ESD Protected Area. The turnstile unlocks after the operator's wrist strap and/or footwear is determined to act as a path-to-ground. All operator test activity is logged into a database to meet the ANSI/ESD S20.20 requirements for on-going quality control purposes. Each log entry includes operator identification, test results, resistance measurements, time, temperature and humidity.

The EMIT SmartLog Pro® with Alvarado EDC Waist High Turnstile verifies the functionality of an operator's wrist strap and footwear, logs the test results, and controls access to an ESD Protected Area. The turnstile unlocks after the operator's wrist strap and/or footwear is determined to act as a path-to-ground. All operator test activity is logged into a database to meet the ANSI/ESD S20.20 requirements for on-going quality control purposes. Each log entry includes operator identification, test results, resistance measurements, time, temperature and humidity. See TB-6594 for more information on the patented* EMIT SmartLog Pro®.

The Alvarado EDC Waist High Turnstile features a rugged industrial grade controller, optical rotation detection (no mechanical microswitches to break or continually adjust), and adjustable time out functionality (turnstile relocks if there is no passage through the unlocked turnstile). An adjustable dampener slows and cushions the rotation and self-centers the turnstile arms to the home position. Stainless steel internal and external components make the turnstile durable and easy to maintain.

The turnstile is configured to Fail-Safe Loss-of-Power Operation. Should loss of power occur, the turnstile's arms will unlock and rotate freely in both directions to allow operators to pass through.



LED INSPECTION MAGNIFIERS

41300/41400/41600/42300/42400/42600

The Green-Lite® series from O.C. White is the most energy efficient, highest output and longest lasting line of inspection lighting systems in the world. These exceptionally designed products offer important features & benefits available only from O.C. White.

Features :

- Standard 4 Diopter (2x) and optional 5 Diopter (2.25x) for optimum balance of magnification & working distance.
- Highest lumen output in a lighted magnifier
- User controlled LED groups shine desired level of light exactly where required.
- Superb dimming software via convenient, reliable membrane switch.
- Precision ground, 6" round optical grade glass
- 6 LEDs standard – 12 LEDS models optional.
- Auto shut off after 4 hours helps prevent energy waste (user activated after purchase)
- High quality die cast aluminum shades and all metal arm components for ESD safety.
- Innovative 3 axis adjustable swivel arm
- 5 Year mechanical warranty. best in the business!

View technical specifications



Color must be specified at time of order Add Color Code to End of Part Number Example:42400-4-BY



PRO-ZOOM® PZE-4.5 EXTENDED WORKING DISTANCE MICROSCOPE

This specially designed microscope provides full 7-45x magnification, at a comparable working distance to standard microscopes with .5x lenses (and half the magnification). At home in ESD critical environments, this microscope also features super-wide 28mm eyepieces for increased operator comfort over the duration of the work day. Dentented zoom stops are included standard on this model as well, which allow you (and your QA/QC Engineers) truly repeatable and documentable inspection results.... an O.C. White Exclusive!

Features:

- Built with ESD Safety Specifically in Mind
- 7-45x Standard Magnification Range (up to 270x with options)
- Super-Wide 28mm High Eyepoint, Wide Field Eyepieces
- 45° Eyepiece Angle with 360° Rotation in Focusing Arm
- 195mm of Working Distance with .5x Aux Lens (standard)
- +/- 6 Diopter Eyepiece Adjustment Range
- Interpupillary Distance Adjustment on Eyepiece Tubes
- Double Ball Bearing Arm Base Assembly for Precision Movement
- 5 Year Mechanical Warranty... Best in the Business!

View technical specifications



SÚPER-SCOPE®

HD INTEGRATED INSPECTION TKADMACZ/TKMACZ WITH 22" LED MONITOR

The heart of the Super-Scope® is our 5MP Hybrid HDMI/USB Camera with 12.1" Integrated LED Screen. Featuring full 1080 resolution (300dpi) for super detailed 'heads up' viewing, this camera features onboard tools including Image & Video capture, calibrated measurement, split screen live view, and more! An 8 GB SD Card is included standard for easy transfer. This system features our exclusive varifocal lens technology, which allows for up to 80x magnification and working distances that can be measured in FEET not inches! Each system ships standard with our 24" tall double ball bearing base (other mounting styles available).

Features:

- Built with ESD Safety Specifically in Mind
- 7-45x Standard Magnification Range (up to 270x with options)
- Super-Wide 28mm High Eyepoint, Wide Field Eyepieces
- 45° Eyepiece Angle with 360° Rotation in Focusing Arm
- 195mm of Working Distance with .5x Aux Lens (standard)
- +/- 6 Diopter Eyepiece Adjustment Range
- Interpupillary Distance Adjustment on Eyepiece Tubes
- Double Ball Bearing Arm Base Assembly for Precision Movement
- 5 Year Mechanical Warranty... Best in the Business!

View technical specifications





ULP-MAG-30

WORK PLACE ERGONOMICS 101

A pretty simple concept, but with far reaching implications. uLTIMA™ EPS marries our award-winning arm technology and world renowned lighting and inspection products together for industry exclusive performance and ultimate ergonomic safety.

Features.

- Maximize efficiency and operator comfort.
- Custom fit to each operator.
- Free up work space.
- Keyboard and mouse tray.
- Equipped with copyholder.
- Many additional accesories.

[View technical specifications](#)



BENCHKAM

DIGITAL CAMERA SOLUTION FOR VISION LUXO BENCH MAGNIFIERS

BenchKam is an innovative solution to image capture and reporting requirements when working with bench magnifiers.

Features.

Capture and share images of subjects
Keep work areas free for working
Retain clear view and full use of bench magnifier.

[View technical specifications](#)



E SERIES STEREO ZOOM TRINOCULAR MICROSCOPES

WITH 45° TILTING HEADWORK

The first ever parallel stereo zoom microscope system from ScienScope. This microscope is comparable to leading brand manufacturers, see it for yourself. Years of development and design have yielded the first affordable high performance system of its kind. There are two types of optical heads available: Tilting or Fixed. The new Tilting/Ergo Head truly resolves the headaches associated with using a stereo microscope continuously. The Ergo head allows up to 45 degrees of tilt/positioning capability and 180 degrees of rotating capability to accommodate operators of any height or bench position of the stereo microscope. The Fixed head provides a 20 degree inclination with extended eye tubes for fatigue reduced viewing.

[View technical specifications](#)

VIZOR

The new ergonomic, stereo, visual inspection system from Scienscope. Inspect with accuracy and work in comfort without eyepieces. This system is affordably priced with several optical and mounting options.

Features.

- 4X, 6X, 8X lenses included.
- Bench stand, bench stand with focusing stage, articulating arm stand with c-clamp.
- Stereo optics.
- No eyepieces. 2X and 10X lens options. Integrated LED lighting.
- Up to 7.5" of working distance
- 5 Year Optical Warranty

[View product specifications](#)



MANTIS ELITE-CAM HD

STEREO MICROSCOPE WITH INTEGRATED HD USB CAMERA

The latest update in the popular Mantis stereo microscope range. Combining the ergonomic benefits of unique eyepiece-less technology with the imaging power of an HD camera, Mantis Elite-Cam HD is the ideal solution for inspection, reworking and reporting.

- 2x – 20x magnification
- Fully integrated HD camera with USB connection
- Unique 3D stereo view and useful annotation software

[View technical specifications](#)



DRV-Z1

DIGITAL STEREO 3D VIEWER WITH ZOOM

DRV-Z1 is a digital stereo 3D viewer with zoom that brings together the benefits of optical stereo microscopy and digital technology into a single unique system.

Features.

- 6x – 186x magnification
- Digital stereo 3D with vivid depth perception
- Remote viewing of stereo 3D images in real-time.
- Digital stereo magnification with 3D depth perception.
- Unparalleled hand to eye coordination
- Remote viewing and sharing of live 3D images.
- Globally patented 3D technology.
- 10:1 zoom ratio for greater flexibility of application.
- Long working distances and low light requirement.
- Large field of view increasing efficiency and ease of working.
- Users able to wear spectacles for eye correction or safety.
- No special eyewear or VR head sets.
- Optimised ergonomics.

[View technical specifications](#)



STENCIL, SQUEEGEE & MISPRINT CLEANER

SCREENCLEANTM PRESATURATED WIPES

Stencil, Squeegee & Misprint Cleaner - ScreenClean is a cost-effective cleaner for removing thick-film pastes, partially cured epoxies and most inks used in screen printing operations. Using a strong, shred-proof disposable wipe saturated in a powerful cleaning fluid, it quickly breaks down the molecular bonds in inks and pastes for fast and enhanced cleaning. It is safe on all types of screens and plastics and will not cause damaging fragile emulsions. Its slow drying time allows for a more thorough cleaning. Use for perfectly clean stencil screens and associated machinery, squeegees and work surfaces.

Features .

- Engineered for removing inks.
- ESD-safe, residue-free.
- Plastic-safe.
- Excellent replacement for methylene, chloride, acetone & other ink-removing solvents.
- No rip. No lint. Heavy duty wipe.
- Unique "slam-shut" package for extra long service life.
- Unlimited shelf-life.

[View technical specifications](#)



STENCIL, SQUEEGEE & MISPRINT CLEANER

SCREENCLEANTM PRESATURATED WIPES

Stencil, Squeegee & Misprint Cleaner - ScreenClean is a cost-effective cleaner for removing thick-film pastes, partially cured epoxies and most inks used in screen printing operations.

Using a strong, shred-proof disposable wipe saturated in a powerful cleaning fluid, it quickly breaks down the molecular bonds in inks and pastes for fast and enhanced cleaning. It is safe on all types of screens and plastics and will not cause damaging fragile emulsions. Its slow drying time allows for a more thorough cleaning. Use for perfectly clean stencil screens and associated machinery, squeegees and work surfaces.

Features:

- Engineered for removing inks.
- ESD-safe, residue-free.
- Plastic-safe.
- Excellent replacement for methylene, chloride, acetone & other ink-removing solvents.
- No rip. No lint. Heavy duty wipe.
- Unique "slam-shut" package for extra long service life.
- Unlimited shelf-life.

[View technical specifications](#)



ESD Cleaning Wipe

The ESD Cleaning Wipe provides fast and safe cleaning in almost any production environment. Using a strong, shredproof, disposable wipe, it is well suited for cleaning ESD mats, bins, benches, tool racks and more.

Versatile, it cleans flux, uncured adhesives, dirt, grease and oils. It also removes finger prints and light oils. With excellent materials compatibility it is both safe and easy to use. Money-saving refills are available from MicroCare (photo to the right). These contain the same wipes and fluid as the tubs above, but reduce costs and help protect the environment by encouraging the re-use of packaging.

Features .

- Presaturated and static dissipative lint-free wipes for cleaning ESD mats, bins, benches, tool racks and more
- Thoroughly cleans flux, uncured adhesives, dirt, grease and oils
- Heavy-duty, no rip, no lint wipes
- Environmental friendly formula
- Safe on ESD mat materials
- Nonflammable, no IPA formula
- Does not dry out or flash near a heat source

[View technical specifications](#)



IPA-BASED PRESATURATED WIPES

ISOCLEAN™

Stencil, Squeegee & Misprint Cleaner - ScreenClean The IPA-Based Presat Wipes - IsoClean are a plastic-safe, non-corrosive, ESD-safe circuit cleaner that quickly and easily removes fluxes, pastes, light oils and grease, as well as organic residues. It is effectively used as a circuit cleaner and stencil cleaner.

MicroCare IPA-Based Presat Wipes - IsoClean are the strongest IPA-based cleaner on the market. While most IPA-based cleaners contain up to 30% water, this cleaner contains virtually no water and is undiluted by airborne humidity. 100% volatile, it evaporates cleanly with no rinsing required.

It is safe on all materials including components, connectors, cables and elastomers and work surfaces.

Features .

- Cleans water-based, rosin, and no-clean fluxes.
- 99.8% pure IPA saturated lint-free wipes.
- Ultra-pure, no residues.
- Medium drying for maximum cleaning time.
- Plastic-safe.

[View technical specifications](#)



REFLOW OVEN CLEANER

Spray on and wipe off, the MicroCare Reflow Oven Cleaner attacks charred, baked-on flux residues that build up on reflow ovens. It also cleans pallets, conveyors, flux condensers, baffles, heating elements, clamps, chains, pulleys, gears and housings. This unique cleaner uses the latent heat generated by ovens and associated equipment to speed the cleaning of these essential systems to boost productivity and lower costs. It reduces down time by making the job fast and easy: when compared to flammable alcohol cleaners, Reflow Oven Cleaner reduces cleaning time by 50%. Further, using isopropyl alcohol to clean reflow ovens makes the cleaning more difficult because alcohol actually cures the residues, so the chore becomes slower and more difficult after each cleaning cycle.

As an added bonus, individual cartons of spray product include a package of 100 MicroCare Drywipes to make a difficult cleaning job easy.

Features.

Melts away burned-on flux residues from wave solder machines & reflow ovens

- Works up to four times faster than isopropanol
- Fast, safe cleaning of pallets, baffles, heating elements, clamps, chains, drive gears & housings
- Plastic-safe, ESD-safe
- Aggressive cleaner with minimum odor
- Activated by the heat of the oven
- Can be used in dip tanks & ultrasonic cleaners
- Nonflammable and non-foaming

[View technical specifications](#)



HEAVY DUTY FLUX REMOVER

SUPER CLEAN™

The Heavy Duty Flux Remover - SuprClean is the industry's most versatile precision cleaner. The powerful flux remover dries instantly with no residue making it ideal for heavy duty printed circuit board cleaning, especially in tight-fitting areas. It is optimized for use on R, RA, RMA, and SA fluxes.

Heavy Duty Flux Remover - SuprClean is the preferred choice for tough SMT defluxing, thru-hole work, BGA boards, hybrids and connectors. Use to remove tough lead-free solders and pastes, as well as most acrylic and conformal coatings.

Safe on most components, epoxies, nylon, polyethylene, polypropylene and PVC. Test on other plastics before use. Dispense directly from the can or use with the MicroCare TriggerGrip cleaning system for faster, safer and more economical process of cleaning printed circuit boards at the work bench.

Features.

- Best option for rosin fluxes
- Removes acrylic conformal coatings
- Instant drying, low odor
- No residues / no rinsing
- Nonflammable, ESD-safe
- Best option for rosin fluxes
- Test on plastics
- MicroCare TriggerGrip™ cleaning system compatible

[View technical specifications](#)



TRIGGER GRIP™ CLEANING SYSTEM

The TriggerGrip Cleaning System quickly cleans rosin fluxes, synthetic fluxes, most no-clean fluxes/pastes as well as oil and grime from electronic assemblies, circuit boards and electronic components.

Use the TriggerGrip for spot-cleaning during rework and repair, or as part of the manufacturing process.

Features.

- Engineered to Wet, Scrub, Rinse & Dry for a better cleaning process
- Reusable, fits most MicroCare aerosol cleaners
- Cleans in seconds
- Unique spray-thru-brush cleaning process
- Safer work environment
- ESD-Safe
- Reduces fluid use by 66%
- Guaranteed to evacuate entire can contents

[View technical specifications](#)





THE 413B HEAVY DUTY FLUX REMOVER

The 413B Heavy Duty Flux Remover is specially formulated to dissolve and remove the most stubborn, encrusted, hard, baked-on fluxes and residues left on parts after soldering. It penetrates quickly to remove non-ionic and ionic contaminants left on the non-component side of circuit boards. It can also work aggressively on isolated and hard to reach areas requiring spot cleaning. It is offered in aerosol and liquid formats.

Features.

- RoHS Compliant
 - Quickly dissolves burnt on flux
 - Fast dry time
 - Zero residue
 - CARB Compliant (Categories & Limit: Electronic Cleaners 75%)
- [View technical specifications](#)



FINE BRAID SUPER WICK™

Fine Braid Super Wick™ is a tightly woven, oxide-free copper braid coated with RMA flux. Its high purity and tight weave make it fast-wicking, quickly removing solder and minimizing dwell time. It is suitable for general purpose solder removal, including reworking and repairing of circuit boards, benchtop repair and service, through-hole repair, and surface mount assembly touch-up

Features.

- Available in 1.0, 1.5, 2.0, 2.5 and 3.0 mm widths.
- Available in 1.5, 7.5 and 15 m lengths.
- ESD safe bobbins for 1.5 m size.
- NSF—nonfood compounds program listed.

[View technical specifications](#)

NO-CLEAN SUPER WICK™

No-Clean Super Wick™ is a tightly woven, oxide-free copper braid coated with a high activation temperature no-clean flux. Its high purity and tight weave make it fast-wicking, quickly removing solder and minimizing dwell time.

It is suitable for general purpose solder removal, including reworking and repairing of circuit boards, benchtop repair and service, through-hole repair, and surface mount assembly touch-up.

Features.

- Flux residue is non-conductive and non-corrosive
- Available in 1.5, 2.0 and 2.5 mm widths
- Available in 1.5 and 15 m lengths
- ESD safe bobbins for 1.5 m size
- NSF—nonfood compounds program listed,

[View technical specifications](#)



LEAD FREE SUPER WICK™

Lead Free Super Wick™ is a tightly woven, oxide-free copper braid coated with no clean flux. Its high purity and tight weave make it fast-wicking, quickly removing solder and minimizing dwell time.

It is suitable for general purpose solder removal, including reworking and repairing of circuit boards, benchtop repair and service, through-hole repair, and surface mount assembly touch-up

Features.

- Suitable for use with lead-free solder.
- Flux residue is non-conductive and non-corrosive.
- Available in 1.5, 2.0 and 2.5 mm widths.
- ESD safe bobbins.
- NSF—nonfood compounds program listed.

[View technical specifications](#)

SUPER DUSTER™ 152

Super Duster™ 152 is a pressurized gas duster made with 100% HFC152A gas. Its powerful blast blows away microscopic dust, lint, and foreign particles. Recommended for use in home or office over 402A.

Features.

- 100 HFC 152A gas.
 - Economical.
 - Ozono safe.
 - Non-VOC
 - Non-flammable aerosol®
 - Zero residue.
 - High flow delivery system.
- Suitable for use in food facilities as Non-Food Chemical - Canadian and NFS recognition letters available on request.
- Filtered to 0.2 Microns.

[View technical specifications](#)





Front view 35720 (6.0 Oz - 180ml)



Back view

DURASTATIC™ YELLOW DISSIPATIVE BOTTLES

- Genuine Menda "dish-type" liquid dispenser pumps and bottle one-handed operation dispensing small amount of liquid into top dish.

- HDPE durAstatic™ Bottles are dissipative and are designed to protect your valuable static sensitive printed circuitry ; electrostatic charges will be removed to ground when grounded.

- No migratory additives - reduces the chance for contamination from the bottle.

- Highly visible with ESD protective symbol, allowing people to immediately know the bottle is ESD protective.

- Meet ANSI/ESD S20.20 and ANSI/ESD S541:
- Rtt: 1 x 104 to < 1 x 1011 ohms tested per ANSI/ESD STM11.12
- < 2 second charge decay, tested per IEC 61340-5-1:1998

- "Flask" style shape provides stability

- Dispenses approximately 2cc of liquid with each pump.

- Genuine Made in America Menda pump and bottle - accept no substitutes.

View technical specifications

FLUX DISPENSER

WITH 18, 20, AND 26 GA NEEDLE TIPS, DURASTATIC® 2 OZ.

- Low Density Polyethylene (LDPE) durAstatic® liquid dispensing flux bottles with needle tips are safe to use around static sensitive components.

- ESD properties are embedded into the bottle and conductive cap for longer product life.

- Silicone Free - No migratory additives or surfactants to cause contamination or oily surface.

- Volume Resistance: 1 x 107 ohms to < 1 x 1010 ohms per ANSI/ESD STD11.12.

- Embossed with ESD protective symbol.

- Available with 3 different needle tip sizes: 18, 20, 26 GA.

- Available in 2 colors: Blue and Yellow

- Made in the United States of America

View technical specifications



DURASTATIC® DISSIPATIVE BOTTLES WITH GHS LABEL

- High density polyethylene (HDPE) durAstatic® bottles are dissipative and designed to protect your valuable static sensitive printed circuitry

- Right-to-Know (RTK) labels inform employees of chemical hazards, as required by OSHA's Federal Hazard Communication Standard 29 CFR 1910.1200

- No migratory additives - reduces the chance for contamination from the bottle

- Embossed with ESD protective symbol, allowing people to immediately know the bottle is ESD protective

- Long lasting dissipative properties:

- Rtt: 1 x 104 to < 1 x 1011 ohms tested per ANSI/ESD STM11.12 < 2 second charge decay, tested per IEC 61340-5-1:1998

- Dispenses approximately 0.2cc of liquid with each pump

- Compatible with any 38-400 threaded neck pump or cap

- Genuine Menda "dish-type" liquid dispenser pumps and bottle one-handed operation dispensing small amount of liquid into top dish

- Genuine Made in the United States of America Menda pump and bottle - accept no substitutes

View technical specifications



AVIATION DEGREASERS

Specially engineered aviation degreasers with strong grease removal of hydraulic fluid, fuel oils, lubricating oils and greases, and other organic residues. They are fast evaporating, quick penetrating, and ideal for cleaning aviation parts.

Features.

- Strong cleaners for removing hydraulic and lubricating fluids.
- Nonflammable, fast-drying and leaves no residue.
- Do not contain n-propyl bromide.
- Compliant with Boeing Spec D6-17487 Rev. T.

[View technical specifications](#)

SPR SUPR CLEAN PS

Hydroentangled cellulose/polyester wipe with high absorbency. Economical, but very high quality wipes are ideal for production and maintenance applications.

Features

- High absorbency
 - Economical
- [View technical specifications](#)



3 BLUE SHOWER

3 Blue Shower is non-flammable cleaner formulated to be powerful, yet economical. Eliminate brushing and scrubbing, saving time and materials. Clean oil and contaminants off of metal parts, printed circuit boards, barcode instruments, switch boxes, gear relays, and electronic motor controllers.

Techspray has produced Blue Shower® maintenance cleaners for over 30 years, making Blue Shower a staple in maintenance departments all over the world!

FEATURES & BENEFITS

- Powerful cleaner
- Non-flammable
- Rapid evaporation
- Zero residue
- Dielectric strength 27.3 kv
- Non-ozone depleting
- NSF registered K1 and K2

[View technical specifications](#)



64129, CL-7000HT DC Electric Screwdriver

DESCRIPTION:

#1 to #10 screws (2.0 mm to 5.0 mm) Tamper resistant torque nut standard 6 ft detachable cord
 Light Spring Type: Yellow
 Heavy Spring Type: Purple

Specifications:

Product Group Assembly
 Electric or Pneumatic Electric
 Manual or Powered/Powered
 Low Voltage DC w/Power Source or Direct Plug-in DC

Brush Type or Brushless Brush
 Torque 2.7 to 22.1 lbf•in 0.3 to 2.5 N•m Body Style Inline Drive Type 1/4"
 Hex Operation Lever Start
 Speed (HI) 480
 Length 10.0 in 255 mm
 Weight 750 g 1.7 lb
 Body Diameter 1.5 in 37 mm
 Light Spring Type Yellow
 Heavy Spring Type Purple
 ESD Safe No Note
 Low speed not recommended

DC Electric Drivers Standard-Size
 Drivers 1.7 - 30 lbf•in
 1/4" hex or 5.0 mm drive Lever or
 Push-to-Start 6' detachable cord



CL-6000, CL-6500, CL-7000 & A-6500 SPECIFICATIONS

Part No.	Model No.	Torque	Drive Size	Approx. RPM		Length	Dia.	Weight (oz)	Spring Type		Recommended Power Pack
				@ 30 VDC	@ 20 VDC†				Light	Heavy	
64116	CL-6000	1.7-8.8 lbf•in 0.2-1 N•m 2-10 kgf•cm	1/4" hex	800	500	8 1/2"	1 3/8"	21.5	Brown		ASG-50 or PS-55
64106	CL-6000	1.7-8.8 lbf•in 0.2-1 N•m 2-10 kgf•cm	5.0 mm	800	500	8 1/2"	1 3/8"	21.5	Brown		ASG-50 or PS-55
64121	CL-6500	2.6-14 lbf•in 0.3-1.6 N•m 3-16 kgf•cm	1/4" hex	900	600	9"	1 3/8"	23.5	White	Yellow	ASG-50 or PS-55
64118	CL-6500	2.6-14 lbf•in 0.3-1.6 N•m 3-16 kgf•cm	5.0 mm	900	600	9"	1 3/8"	23.5	White	Yellow	ASG-50 or PS-55
64126	CL-7000	2.6-22 lbf•in 0.3-2.5 N•m 3-25 kgf•cm	1/4" hex	750	*	10"	1 3/8"	27	Yellow	Purple	CLT-60 or PS-55
64129	CL-7000HT	2.5-24 lbf•in 0.28-2.7 N•m 2.8-27 kgf•cm	1/4" hex	550	*	10"	1 3/8"	27	Yellow	Purple	CLT-60
64117	CL-7000	2.6-22 lbf•in 0.3-2.5 N•m 3-25 kgf•cm	5.0 mm	750	*	10"	1 3/8"	27	Yellow	Purple	CLT-60 or PS-55
64124	A-6500	4.3-16 lbf•in 0.5-1.8 N•m 5-18 kgf•cm	1/4" hex	1700	*	9"	1 3/8"	24	Yellow		CLT-60
64284	A-6500HT	4.5-30 lbf•in 0.5-3.4 N•m 5-34 kgf•cm	1/4" hex	690	*	9"	1 3/8"	24	Green		CLT-60

CL-6000, CL-6500, CL-7000 & A-6500

- Standard to medium torque applications
- #1 to #10 screws (2.0 mm to 5.0 mm)
- Alpha-Series (A-Series) features a rare earth magnet motor for more power
- Tamper-resistant torque nut standard
- Low RPM models for low speed applications
- For 220V power supplies,

1915 - 1916 SD

Description:

Fixed bench with tubular frame and anti-skid ends, polyurethane seat, 8-position graduate seat height adjust, and forward and side turn seat tilting adjust.

Features:

- Seat: Solid polyurethane (PUR) foam cover steel soul free of conductive CFC (ESD conductive 1916) with integral leather.
- Machinery: Iron with height adjust from 60 to 83 cm on eight 3.5 steps, each one with 16° side turn, 15° forward tilt and/or workmanship.
- Base: 0.27 mm tubular iron frame, 2 mm wall thickness.
- Painting: Black epoxic baked.
- Ends: Iron insert covered with polyurethane (PUR) (ESD conductive 1916).
- Maintenance: Free of maintenance:
- Spare parts: Free of spare parts.
- Warranty: 5 years (1 shift every 8 hrs. a day) against material or workmanship faults.
- Weight: 8 Kg.

Dimensions:

- Total height: 83 cm
- Seat width: 31 cm.
- Seat depth: 22 cm.
- Max. base width: 52 cm
- Base depth: 42 cm
- Electrical resistance: 1×10^9 Ohm, acc. to STM 12.1-2006



1912 ESD CHAIR

Description:

Rotary chair with solid conductive polyurethane foam molded integral leather back and seat, back tilting machinery, back height pneumatic adjust, base with 5 adjustable rimmed feet rest anchors (1912A) and conductive ends; 1 x 109 W resistance.

Dimensions:

- Seat height measured from the floor:
 - 1912A - max 54 cm, min 39 cm.
 - 1912B - max 80 cm, min 50 cm.
- Seat depth: 39 cm.
- Seat width: 42 cm.
- Back height: 26 cm.
- Back width: 42 cm.
- Foot rest adjust range: 25 cm (1912A).
- Base diameter: 62 cm.



Piso Conductivo

Features:

- Seat and back: Seat with 8 layers of molded beech wood: Thickness: 9 mm; back with 7 layers: Thickness: 8 mm covered with solid conductive polyurethane (PUR) foam and integral leather.
- Pneumatic elevator: 26 cm height adjust (1912A), effective 11 cm (1912B), 0.5 cm rail tube, 300 N pneumatic charge.
- Base: Die-cast aluminum, five 62 cm anchors painted in black. 0 (24").
- Rimmed foot rest (only 1912A): Adjustable, 0.45 cm, chromed rim/black star.
- Casters and ends: Conductive black ends. Polyamide (PA) conductive black twin casters (optional).
- Maintenance: Free of maintenance:
- Spare parts: Free of spare parts.
- Warranty: 5 years (1 shift every 8 hrs. a day) against material or workmanship faults.



METRO MOBILE END- AND SIDE-LOAD WIRE BUN PAN RACKS

Cost Effective: Metro's Bun Pan Racks offer an economical solution for sturdy, dependable storage and transport of bun pans.

Two Styles Available: End-load models allow for optimum floor space utilization, while side-load models offer a larger tray landing area. Both styles can be loaded on one side and unloaded from the other for maximum efficiency and convenience
Choice of Slide Spacing: Each style is available with a choice of slide spacings — 1 1/2" (38mm), which has a 38 pan capacity, and 3" (76mm), which has a 20 pan capacity.

UPS Shippable in one box for lower freight costs.

Quick, Secure Assembly: Units assemble quick and easy without special tools.

Lightweight, Maneuverable: 5" (127mm) swivel casters promote ease of mobility



ESD TRAYS OVERVIEW

Features:

MFG Tray's Fibrestat product line encompasses a variety of trays, containers and specialty products molded from high-strength, glass-reinforced composites that are specifically formulated to dissipate electrostatic discharge and to safely and effectively convey, accumulate and store staticsensitive parts and assemblies.

The company's ESD-safe conductive products have a surface resistivity of less than 105 to 106 ohms, and static dissipative products have surface resistivity between 105 to 1011 ohms.

Model Measures

332000 Tray 25 3/4" (654mm) x 17-7/8" (454mm) x 1-1/8" (29mm)
 217109 Tray 27" (686mm) x 20" (508mm) x 1" (25mm)



SMT ESD PCB MagazineRack

ESD SMT PCB magazine rack is made according to International standard, comply to International and National standard. It is used for inserting PCB boards by manual or used in loader and unloader machine for SMT factories. It has many size to fit for different SURFACE RESISTANCE

- 10e5-10e9ohms

Side Plate Material: PP compound with conductive fiber

- 2.Side Plate Type: Injection mold
- 3.Color: black
- 4.Trolley frame rack material: stainless steel
- 5.Trolley frame rack: square type
- 6.Adjustable method: handle adjustable/screw adjustable





ESD PLASTIC CONTAINERS

protect your electrical components from typical electromagnetic interference (EMI), electrostatic or induced fields. Quantum's Ultra Stack conductive containers provide a barrier that these fields cannot penetrate and prevent the build-up of electrostatic charge.

- It will not interfere with the conductivity of your equipment.
- Molded from a carbon-filled copolymer polypropylene material with an electrostatic decomposition rate of less than 0.1 second.
- Meets the conductivity standards tested with ASTM-D257 methods

- Meets Mil-B-81075B military specifications
The surface resistivity is less than 10 5 ohms per square
- It remains

NON-ESD PLASTIC CONTAINERS

Ideal for industrial, commercial, electronic and sanitary industries.
High density injection molded polypropylene. Resists most solvents and chemicals.
High impact resistance provided by multi-ribbed sides
Stacks securely with or without optional lids thanks to raised edge edges
Extra rib resistance also prevents bulging and spread when stacked.



ESD CORRUGATE BOX

Description:

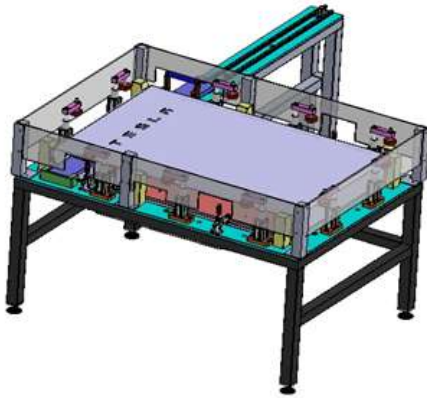
Provides physical protection with conductive material providing reliable path-to-ground

- Includes steel wire frame for extra strength
- Conductive plastic handle for ease of handling while providing reliable path-to-ground
- Product ships assembled
- Available options include: (1) Lid manufactured from Plastek™; (2) Static Dissipative Foam bottom to provide ESD and shock protection

Convenient storage tray made of conductive material, providing reliable path-to-ground

- Includes steel wire frame which allows trays to stack, improving productivity and saving valuable space
- Static dissipative foam bottom provides ESD and shock protection
- Product ships assembled
- Static Dissipative Foam bottom laminated to Plastek™
- Conductive 10E2 - 10E4 ohm material provides reliable path-to-ground
- Ideal for use where corrugated and/or paper products cannot be used
- Great container for Kanban





ASSEMBLY FIXTURE

Precision activity
 Improve production
 time Quality in our
 product

Process automation, service in automated systems (PLCs,
 sensors, migrations, among others)

our products

- First and second pass dishes
- SMT pallet
- Wave palette
- Selective wave pallet
- Selective wave nozzle
- Pressfit bases
- Pressfit dice
- Base router
- Assembly Fixtures
- Screw fixing
- Welding Fixtures Manual
- Manipulation Fixtures
- Manual presses
- Automatic stations
- Machinery Automation
- Spare parts

EVA BLACK Conductive EVA Foam

Ethylene vinyl acetate (EVA) foams are a specific form of cross foams. Although firmer than other closed cell materials, EVA foams have a softer and more rubber like texture. They also provide an recover their shape. As a result EVA foams are ideal in product packaging applications where a high level of protection and durability Conductive EVA foam offers superior package and transport ESD sensitive devices and assemblies. It is non negative impact on solderability, does not slough and is non

SPECIFICATIONS

Physical characteristics

- Color : BLACK
- Indent Force Deflection @ 25% :
- Corrosity :

Item Numbers

EVA-3MM-BLACK 16 in. x 24 in. x .125 in.
 EVA-13MM-BLACK 16 in. x 24 in. x .13 in.
 EVA-25MM-BLACK 16 in. x 24 in. x 1.0 in.
 BLACK Conductive EVA Foam

+ 68C to - 70C (factory test)
 2.5 Kg/cm (per ASTM D3575)
 2.7 Kg/cm² (per ASTM D3575)
 9.8 psi (per ASTM D3575)
 < 5 x 10⁵ ohms (per ASTM D991)
 < 5 x 10⁵ ohms (per ASTM D991)
 1/8 in. thickness)
 .500 in. (1/2 in. thickness)
 (1 in. Thickness)



QPK-1000-METAL-IN STATIC SHIELDING BAGS

Description:

Transparent, metalized static shielding bags that provide a safe package for your ESD sensitive products. These bags are a four layer construction incorporating a polyester dielectric and metal layer to provide Faraday effect shielding of ESD and fields. Tribocharging is minimized by the specially processed polyethylene. The bags are available flat or with various style closures. QPK bags are lot coded for QC traceability.

- Physical Properties: Typical Values - MP005
- Thickness: 3.1 mils. Nominal - MP005
- Light Transmission :40%- Tobias / Macbeth
- Tensile Strength: > 25 lbs - ASTM D882
- Seal Strength: Pass - MIL-STD-81705

Heat Sealing Conditions

- Temperature: 250oF - 375 oF
- Time: 0.5 – 3.5 seconds
- Pressure: 30 – 70 psi
- Outgassing: Pass - ASTM E595
- Non-corrosive: Pass - FTMS 101 MTH 3005

Electrical Properties

- Surface resistivity / Resistance: ASTM D257 - or ANSI/ESD STM 11.11
- Interior: < 10^{11} ohms
- Exterior: < 10^{11} Metal ohms
- 100 ohms
- Static Shielding:
- Static Decay: < 0.05 seconds – FTMS 101 MTD 4046

Charge Generation

- Teflon: 0.09 nC/sq. in. - Modified Incline Plane
- Quartz: 0.01 nC/sq. in.
- Recommended Storage: 36 F – 80 F - 10% - 30% RH



31201517/CIN-COLOR LUVITAPE COLOR TAPE 48x150

Description:

Polypropylene Film (BOPP). Synthetic Hot Melt Adhesive - Backing 20/20 Total thickness of the tape Tape 0.040 mm (1.6mm). Film thickness 0.020 mm (0.001 inch) +/- 0.002 mm. Longitudinal Tension 19 pounds / inch +/- 3 lb./in. Transverse Tension 32 lbs / inch +/- 3Lb / in. Adhesion to Steel 40 Oz / inch +/- 5%. 110% elongation at break. Width 2 "(48 mm). Meters 150 mts +/- 0.5 mts. Available colors Orange Red Yellow Blue Storage conditions Store in a clean, dry place. Temperature 25 ° + - 2 ° C 55% + - 5% relative humidity is recommended. Life Period Approximately 1 year.



PLI-18/50 18 "STRETCH FILM CAL 50 1100 ft

Description:

Co-Extruded Polyethylene film which is used in the Tying and Strapping of Pallets, Furniture, in addition to having other applications in product packaging. It can be used manually or with any applicator. Due to its low weight, it has a higher performance than other resins, it provides a good barrier against moisture. The 45, 50, 60, 70 and 80 Gauge manual films have a multilayer Polyolefin co-extrusion, developed for packaging a wide variety of products such as paper, plastics, textiles, food, medicine, leather, etc.

- Recyclable
- High elongation
- Transparent • Dust protection
- High resistance
- Greater adherence
- Performance
- Manual measurements in inches: 1", 2", 3", 5", 9", 10", 18", 20". • Gauges: from 50 to 80.
- Feet: from 500 to 2000.



ADDITIONAL PRODUCTS

AVANTE

- EVA TRAYS

- FIRST AND SECOND PASS VACUUM PLATE-MPM.

- FIRST AND SECOND PASS VACUUM PLATE-DEK

- PRINTING PALLETS

- WAVE SOLDER PALLETS

- SELECTIVE PALLETS

- SELECTIVE WAVE NOZZLE

- H5" DEK TOWER

- H2" DEK TOWER

- PRESSFIT BASES

- PRESSFIT DICE

- ROUTER BASES

- ASSEMBLY FIXTURES.

- SCREWING FIXTURES

- MANUAL WELDING FIXTURES

- HANDLING FIXTURES

- MANUAL PRESSES

- AUTOMATIC STATIONS

- MACHINERY

- AUTOMATION

- REPLACEMENT PARTS

